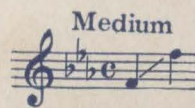
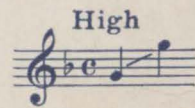


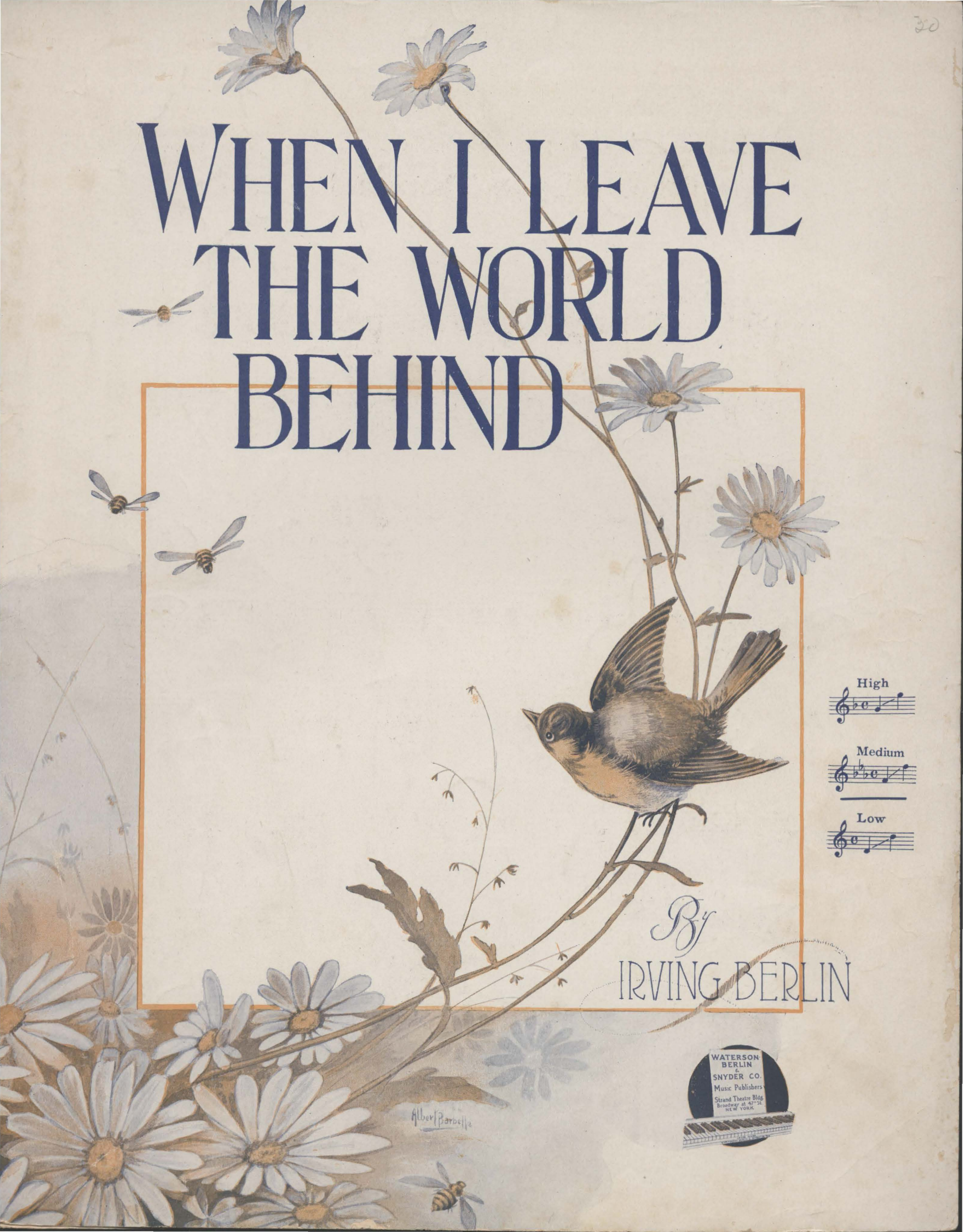
WHEN I LEAVE THE WORLD BEHIND



By
IRVING BERLIN



Albert Barbella



Respectfully dedicated to the memory of Charles Lounsbury, whose legacy suggested this song.

When I Leave The World Behind.

By IRVING BERLIN.

Moderato.

f

The piano introduction consists of two staves. The right hand features a series of chords and eighth-note patterns, while the left hand provides a steady bass line with eighth notes. The music is in a minor key and common time.

Voice.

I know a mill - ion - aire, Who's bur - dened down with care,
To ev' - ry wrink - led face I'll leave a fi - re place,

mp

The first line of the song features a vocal melody in the upper staff and piano accompaniment in the lower two staves. The piano part consists of chords and a simple bass line.

A load is on his mind. _____ He's think - ing of the day
To paint their fav' - rite scene, _____ With - in the gol - den rays,

The second line of the song continues the vocal melody and piano accompaniment. The piano part includes some melodic lines in the right hand and a consistent bass line in the left hand.

When he must pass a - way And leave his wealth be - hind. _____
 Scenes of their childhood days, When they were sweet six - teen. _____

I have - n't an - y gold To leave when I grow old,
 I'll leave them each a song To sing the whole day long,

Some-how it passed me by. _____ I'm ve - ry poor, but still
 As toward the end they plod. _____ To ev - ry bro - ken heart

I'll leave a pre - cious will When I must say good - bye. _____
 With sor - row torn a - part, I'll leave the love of God. _____

Chorus.
With feeling

I'll leave the sun - shine to the flow - ers, I'll leave the

p-f

spring - time to the trees; And to the

old folks I'll leave the mem - 'ries Of a

ba - by up - on their knees. I'll leave the

night time to the dream - ers, — I'll leave the song birds to the

mp

blind; — I'll leave the moon a - bove To

those in love, When I leave the world be - hind, — When

1. I leave the world be - hind. 2. I'll leave the hind. —

D.C.

THE MOST WONDERFUL SONG EVER WRITTEN BY

ARABY

IRVING BERLIN

CHORUS

Ar - a - by, when shades of night ap-pear I seem to hear, you

call - ing; Ar - a - by, You seem to beck-on, and I reck-on I'll be

hur - ry - ing back a-gain. Seems to me, a maid-en's

face ap-pears, I see her tears are fall - ing, fall-ing, be - cause I left her

Copyright 1915 by Waterson, Berlin & Snyder Co., Strand Theatre Bldg. Broadway at 47th St. New York
 International Copyright Secured
 Copyright, Canada, 1915 by Waterson, Berlin & Snyder Co.



A. BARBELE

For sale by all music dealers or will be sent direct by publishers on receipt of 30c. in stamps
 WATERSON, BERLIN & SNYDER CO.
 STRAND THEATRE BUILDING, BROADWAY AT 47th STREET, NEW YORK.