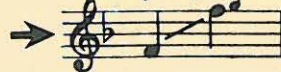


M<sup>c</sup>Carne

# TOO-RA-LOO-RA-LOO-RAL



# THAT'S AN IRISH LULLABY



Contralto (*eb to eb*)  
or Baritone (*lead*)  
Soprano (*g to ab*)  
or Tenor



DUETS

Soprano (*g to g*)  
or Tenor (*lead*)  
Contralto (*b to e*)  
or Baritone



# J. R. SHANNON

PUBLISHED IN THE FOLLOWING ARRANGEMENTS

Vocal Solo, C—Eb—F—G.....	each	.50	3 Part Mixed (SAB).....	.16
Vocal Duet, Eb—G.....	each	.60	4 Part Mixed (SATB).....	.16
2 Part Treble (SA or TB).....		.15	Piano Solo (Gotham Classics No. 85).....	.50
3 Part Treble (SSA).....		.15	Accordion Solo (Bass Clef).....	.50
4 Part Treble (SSAA).....		.16	Vocal Orchestration, F-C.....	each 1.00
4 Part Male (TTBB).....		.16	Dance Orchestration (Fox Trot).....	1.00
Band.....		1.00		

OPERATIC



WHEN PERFORMING THIS COMPOSITION KINDLY GIVE ALL PROGRAM CREDITS TO

## M. WITMARK & SONS,

NEW YORK

PRINTED IN U.S.A.

TOO-RA-LOO-RA-LOO-RAL  
(That's An Irish Lullaby)



# FAMOUS IRISH SONGS

CHAUNCEY OLCOTT  
& GEO. GRAFF Jr.

## When Irish Eyes Are Smiling

PRICE 50c Each  
ERNEST R. BALL

*Valse moderato*

When I-rish eyes are smi-ling, — Sure it's like a morn in spring. — In the lilt of

Copyright MCMXII by M. Witmark & Sons

## My Wild Irish Rose

CHAUNCEY OLCOTT

*With much expression*

My wild I-rish rose, — The sweet-est flow'r that grows, — You may search ev-'ry-where, but

Copyright MDCCCXCIX by M. Witmark & Sons

RIDA JOHNSON YOUNG  
*Allegretto, ma espressivo*

## Mother Machree

CHAUNCEY OLCOTT  
& ERNEST R. BALL

Sure, I love the dear sil-ver that shines in your hair And the brow that's all fur-rowed And

Copyright MCMX by M. Witmark & Sons

WILLIAM JEROME

## That Old Irish Mother Of Mine

HARRY VON TILZER

*With much feeling*

In her eyes there's the dew of Kil-lar-ney, — On her cheek there's the rose of Kil-dare —

Copyright assigned MCMXXV to M. Witmark & Sons

J. KEIRN BRENNAN

## That's How The Shannon Flows

ERNEST R. BALL

*Little slower*

Then o-ver to Gal-way it dan-ces a-long, And en-ters Lough Derg with a bit of a song, The

Copyright MCMXV by M. Witmark & Sons

JOSEPH M. WHITE

## Bells Of Killarney

GEORGE J. TRINKAUS

*With tender feeling*

Shure those bells of Kil-lar-ney are call-ing to me, Like the voice of that loved one Sweet

Copyright MCMXXVII by M. Witmark & Sons

FISKE O'HARA  
& J. KEIRN BRENNAN

## Ireland Is Ireland To Me

ERNEST R. BALL

*With much expression*

Sure, my heart is in Ker-ry, in old Lon-don-der-ry, Kil-lar-ney, Kil-ken-ny and Clare —

Copyright MCMXV by M. Witmark & Sons

## Too-ra-loo-ra-loo-ral That's An Irish Lullaby

J. R. SHANNON

*Smoothly with much expression  
in time*

Too-ra-loo-ra-loo-ral, — Too-ra-loo-ra-li, Too-ra-loo-ra-loo-ral, — Hush now, don't you cry! —

Copyright MCMXIII by M. Witmark & Sons



# Too-ra-loo-ra-loo-ral THAT'S AN IRISH LULLABY

Lyric and Music  
By J. R. SHANNON

Moderately

The piano introduction consists of two staves in 2/4 time. The right hand features a melody of eighth notes with a descending line, while the left hand provides a steady accompaniment of eighth notes. Dynamics include *mf* and *poco rit.*

With expression

The first system shows the vocal line and piano accompaniment for the first verse. The vocal line is in a single staff with lyrics underneath. The piano accompaniment is in two staves. Dynamics include *mp in sustained style*.

O - ver in Kil - lar - ney, — Man - y years a - go, — Me  
Oft, in dreams, I wan - der — To that cot a - gain, — I

The second system shows the vocal line and piano accompaniment for the second verse. The vocal line is in a single staff with lyrics underneath. The piano accompaniment is in two staves.

Mith - er sang a song to me In tones so sweet and low, Just a  
feel her arms a hug - gin' me As when she held me then. And I

6288

Copyright MCMXIII by M. Witmark & Sons  
Copyright Renewed

M.W.&SONS 13439-3

Publisher member of A. S. C. A. P.

International Copyright Secured.

Made in U. S. A.

ALL RIGHTS RESERVED INCLUDING PUBLIC PERFORMANCE FOR PROFIT  
The making of any unauthorized adaptation, arrangement or copy of this publication, or any part thereof,  
is an infringement of copyright and subjects the infringer to severe penalties under the Copyright Act.



sim - ple lit - tle dit - ty, In her good ould I - rish way, And I'd  
hear her voice a hum - min' To me as in days of yore, When she

give the world if she could sing That song to me this day.— *retard*  
used to rock me fast a - sleep Out - side the cab - in door.— *retard*

REFRAIN *Smoothly with much expression*  
*in time*

Too - ra - loo - ra - loo - ral, — Too - ra - loo - ra - li, *mp in time*



Too - ra - loo - ra - loo - ral, — Hush now don't you cry! —

Too - ra - loo - ra - loo - ral, — Too - ra - loo - ra -

li, Too - ra - loo - ra - loo - ral, That's an I - rish lul - la -

1. *retard*

by. loo - ral, That's an I - rish lul - la - by.

2. *Optional ending* *retard*

Including "I LOVE ME AND THE WORLD IS MINE", "A LITTLE BIT OF



# IRISH SONG FOLIOS

## *Songs of Ireland*

100 Favorite Irish Songs

Compiled and Arranged

by

J. BODEWALT LAMPE

*This collection offers the best of the Irish songs that come straight from the heart of Erin. They have been carefully edited and arranged to suit the average voice range and are presented for your pleasure and enjoyment.*

Price \$1.00 in U. S. A.



## *Echoes from Erin*

*An Album of Ballads, Novelties and Comic Songs (old and new) compiled expressly for, and dedicated to, all those who love Irish songs.*

### Contents

KERRY DANCE  
COME BACK TO ERIN  
THE IRISH JUBILEE  
LOW BACKED CAR  
MOLLY  
MY IRISH SONG OF SONGS  
SNOWY BREASTED PEARL  
SOMEWHERE IN IRELAND  
SWEET INNISCARRA  
BELIEVE ME IF ALL THOSE  
ENDEARING YOUNG CHARMS  
WON'T YOU COME BACK TO  
MOTHER MACHREE?

THE HARP THAT ONCE THROUGH  
TARA'S HALL  
LAST ROSE OF SUMMER  
LONDONDERRY AIR  
PRETTY GIRL MILKING HER COW  
IRELAND I LOVE YOU,  
ACUSHLA MACHREE  
KATHLEEN MAVOURNEEN  
'T WAS ONLY AN IRISHMAN'S DREAM  
WEARING OF THE GREEN  
YOU BROUGHT IRELAND RIGHT  
OVER TO ME

Price 60¢ in U. S. A.



MUSIC PUBLISHERS HOLDING CORPORATION

Remick Music Corp. • M. Witmark & Sons

RCA BLDG. • ROCKEFELLER CENTER • NEW YORK 20, N. Y.