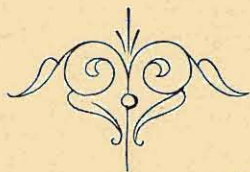
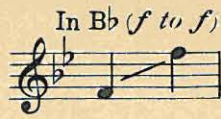
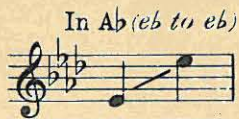


Rhoda Dean.  
Oct. 13, 1917.



# THERE'S A LONG, LONG TRAIL



WRITTEN BY

**STODDARD KING**

COMPOSED BY

**ZO ELLIOTT**

Solo 60 Cents

Duet 75 Cents

Octavo, Male, Female and Mixed Voices 15 cents



M. WITMARK & SONS,

NEW YORK • CHICAGO • LONDON.

ANOTHER VOCAL GEM FROM THE WELL-KNOWN  
**WITMARK BLACK AND WHITE SERIES**

BY THE WORLD FAMOUS COMPOSER

— **ERNEST R. BALL** —

**MY ROSARY FOR YOU**

Lyric by **AMY ASHMORE CLARKE**

Published as follows—SOLO, FIVE KEYS—C, (c to D) D<sup>b</sup>,—E<sup>b</sup>,—F,—G. DUET, TWO KEYS—D<sup>b</sup>,—F.  
QUARTETS,—FOR MALE,—FEMALE AND MIXED VOICES—TRIO,—FOR FEMALE VOICES.

*In Barcarolle Tempo with much expression.*

A ros - a - ry I wrought for you, Each pearl a mem - o - ry — Of  
hap - pi - ness my heart once knew, Of love you had for me. — Each ros - a - ry must  
have its cross To bear un - to the end, — And mine is just my bro - ken heart, Which  
on - ly you can mend. — My ros - a - ry will

*p*  
*rit.* *a tempo*  
*rit.* *poco rit.* *mf*  
*a little animated*

THE ABOVE CAN BE HAD WHEREVER MUSIC IS SOLD OR OF THE PUBLISHERS

**M. WITMARK & SONS — 441 WITMARK BUILDING — NEW YORK**

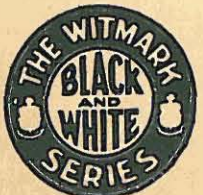
Price, Solos 60c. Duets 75c.

Quartets 15c Each, Net, Postpaid.

If you are interested in Beautiful Songs (Sacred or Secular) send for our Catalog containing complete Poems and Thematic quotations from some of the most beautiful numbers in the well-known

**WITMARK BLACK & WHITE SERIES**

ENCLOSE STAMP FOR POSTAGE.



# There's A Long, Long Trail

Written by  
STODDARD KING

Composed by  
ZO ELLIOTT

Moderato

The piano introduction is in 4/4 time, marked Moderato. It begins with a treble clef and a key signature of two flats (B-flat and E-flat). The music starts with a dynamic of *f* (forte) and features a melodic line in the right hand and a supporting bass line in the left hand. The piece concludes with a dynamic of *p* (piano).

*With expression*

Nights are grow-ing ver - y lone - ly, Days are ver - y  
All night long I hear you call - ing, Call - ing sweet and

The first system of the vocal and piano accompaniment. The vocal line is on a single staff with a treble clef. The piano accompaniment is on two staves (treble and bass clefs). The lyrics are written below the vocal staff. The piano part includes a dynamic of *p* (piano) and features a melodic line in the right hand and a supporting bass line in the left hand.

long; — I'm a - grow-ing wear - y on - ly  
low; — Seem to hear your foot-steps fall - ing,

The second system of the vocal and piano accompaniment. The vocal line continues on a single staff with a treble clef. The piano accompaniment continues on two staves (treble and bass clefs). The lyrics are written below the vocal staff. The piano part includes a dynamic of *p* (piano) and features a melodic line in the right hand and a supporting bass line in the left hand.

6346

M.W.&SONS 15010-4

Copyright assigned MCMXV to M. Witmark & Sons  
Copyright MCMXIII by West & Co.  
International Copyright Secured

List - 'ning for your song. Old re - mem-bran - ces are  
 Ev - 'ry where I go. Tho' the road be-tween us

throng - ing Thro' my mem - o - ry. Till it seems the world is  
 stretch - es Man - y a wear y mile. I for - get that you're not

full of dreams Just to call you back to me.  
 with me yet, When I think I see you smile.

CHORUS *Evenly with much expression*

There's a long, long trail a - wind - ing In to the land of my

*p* - - *f a tempo*

dreams,— Where the night - in-gales are sing - ing And a white moon

*pp* *pp* *rit.*

beams:— There's a long, long night of wait - ing— Un - til my

*f* *pp*

dreams all come true;— Till the day when I'll be

*ff*

go - ing down That long, long trail with you. There's a you.—

*f* *rit.* *ff*

# Marching Chorus Published by Popular Request

In Martial Time (*But not fast*)

*p - - f*

There's a long, long trail a wind - ing — In - to the land of — my dreams, —

— Where the night - in - gales are sing - ing And a white moon

beams: — There's a long, long night of wait - ing — Un - til my dreams all —

— come true; — Till the day when I'll be go - ing down. That

long, long trail with you. There's a you.

1. 2.

*f ff*

# BEAUTIFUL SACRED SONGS FOR CHURCH, HOME AND CONCERT USE

## Teach Me To Pray

Lyric by  
GEORGE GRAFF Jr.

Solo Five Keys—*E♭, (♭♭ to d) F, (c to c) G, (d to f♯) A♭, (e♭ to g) B♭, (f to a)*  
Duet Two Keys—*F and B♭. Octavo; Male, Female or Mixed Voices*

Music by  
JESSIE MAE JEWITT

Andante religioso  
*Fervently*

Teach me to pray, Lord God in Heav'n a - bove, Teach me to know that in Thy bound-less love, Thou see-est ev - - 'ry  
spar-row that may fall, And giv - est what is best for all. Al - tho' my ways are laid in pas-tures drear,

*p dolce* *mp* *p rit.* *mf a tempo*

## I Come To Thee

Lyric by  
GEORGE GRAFF Jr.

Solo Four Keys—*D♭, (♭♭ to c) E♭, (c to d) F, (d to e) A♭, (f to g)*  
Duet in *F. Octavo; Male, Female or Mixed Voices*

Music by  
CARO ROMA

Lento

I come to Thee at last, oh Lord, for rest, With wa-sted years, with heart and mind op - pressed; And now Thy  
prom - ise is to me so sweet, That I shall find for - give - ness at Thy feet.

*mp* *dim.* *rit.* *dim.* *colla voce*

## It Was For Me

Solo Three Keys—*F, (c to d) A♭, (e♭ to f) B♭, (f to g)*  
Duet Two Keys—*B♭ and F. Octavo; Male, Female or Mixed Voices*

Lyric and Music  
By CHARLES B. BLOUNT

Andante cantabile

It was for me, that Je - sus came to suf - fer, It was for me, He died up - on the tree, It was for  
me, with God, He in - ter - ced - ed, It was for me, ah yes, it was for me.

*p* *cresc.* *mf* *dim.* *mp* *ad lib.* *p* *cresc.* *mf* *dim.* *mp* *colla voce* *cantando*



Published and Copyrighted by M. Witmark & Sons 10 Witmark Building, New York  
Complete Copies can be had wherever Music is sold or from the Publishers  
Solo, 60 cents; Duet, 75 cents; Octavo, 15 cents each net, postpaid



# The Trail That Leads to Home

Lyric by EDWARD LOCKTON.

Music by HERBERT MACKENZIE.

COMPANION SONG TO THE WORLD FAMOUS BALLAD

## "THERE'S A LONG, LONG TRAIL"

BOTH SELECTED FROM THE WELL-KNOWN

### WITMARK BLACK AND WHITE SERIES

PUBLISHED IN THREE KEYS: F. (C to D) G. (D to E) B<sup>b</sup>. (F<sup>b</sup> to G) 60 CENTS

#### CHORUS

There's a trail that calls me home - ward Night and day,

*p a tempo*

In my dreams the loved ones beck on Far a

*Red. \**

way. Through the sha - dows and the sun - shine

Some day I shall roam Down that long, long trail a - wind - ing,

*ten.*

THE ABOVE CAN BE HAD WHEREVER MUSIC IS SOLD OR OF THE PUBLISHERS

M. WITMARK & SONS — WITMARK BUILDING — NEW YORK

Price, Solo 60c.

If you are interested in Beautiful Songs (Sacred or Secular) send for our Catalog containing complete Poems and Thematic quotations from some of the most beautiful numbers in the well-known

**WITMARK BLACK & WHITE SERIES**

SEND STAMP FOR POSTAGE

