

SWEET IS THE NIGHT, MY LADY

HAWAIIAN
SERENADE



HART'S BOX
PHOTO
SF - LA

By *Joseph B. Carey*
Composer of
"SHE SANG ALOHA TO ME"

E MORGAN

C. H. SHORT MUSIC CO.
P.O. BOX 111 CAL.
Buell Music Co.
San Francisco

Sweet Is the Night, My Lady

(HAWAIIAN SERENADE)

Words and Music by
JOSEPH B. CAREY

Moderato

mf

The piano introduction consists of two staves in 3/4 time, marked Moderato. The music is in a key with two flats (B-flat major or D-flat minor). It begins with a series of chords in the right hand and a simple bass line in the left hand, gradually building up to a more complex texture.

Andante Moderato

Sweet is the night, my la - dy, 'Neath fair Ha - wai - ian skies —
Here at thine al - tar kneel - ing, My heart I give to thee —

p

The piano accompaniment for the first vocal line is in 3/4 time, marked Andante Moderato. It features a steady bass line and chords in the right hand that support the vocal melody.

Soft - ly my u - ku - le - le, Tells thee of Par - a - dise —
Mine in - most soul re - veal - ing, Hear thou love's Ro - sa - ry —

The piano accompaniment for the second vocal line continues the harmonic support, with the right hand playing chords and the left hand providing a consistent bass line.

Night and the stars were made for love, Come thou and claim thine own —
Ah! leave me not in grief to sigh, Bid thou my heart re - joice —

The piano accompaniment for the third vocal line concludes the piece, with the right hand playing chords and the left hand providing a final bass line.

REFRAIN

Bright stars of love are gleam - ing, Gleaming in skies a - bove, —

Light - ing the way that leads us, In - to the land of love. —

Wake from thy dreams, sweet la - dy, Hear thou my ser - e - nade, —

rall.
I love but thee, O love thou me, Sweet Ha - wai - ian maid. —
rall.

Thematic List

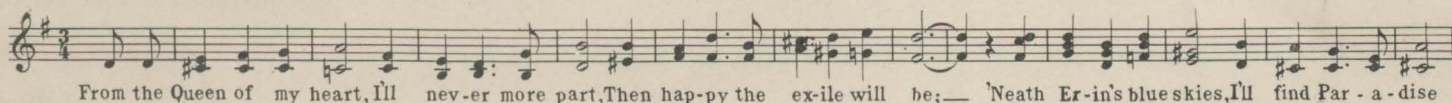
Compositions of Joseph B. Carey

PUBLISHED BY

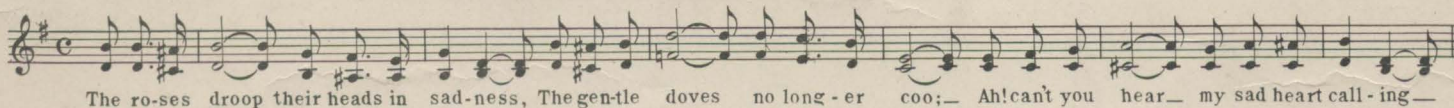
Buell Music Company

SAN FRANCISCO

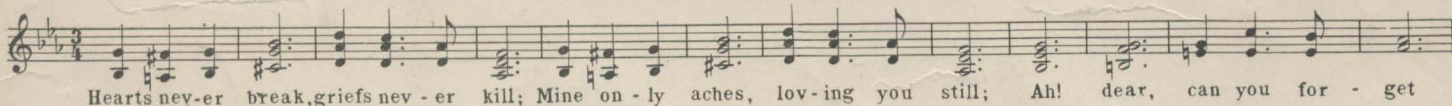
THE COLLEEN WHO WAITS FOR ME, Irish Ballad



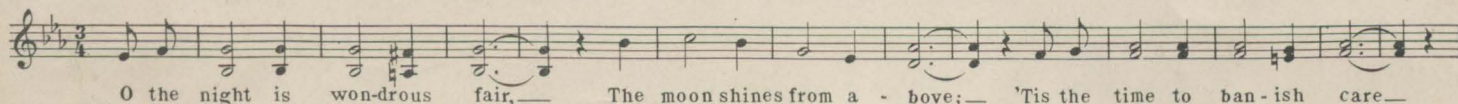
SIERRA SUE, A Song of the Hills



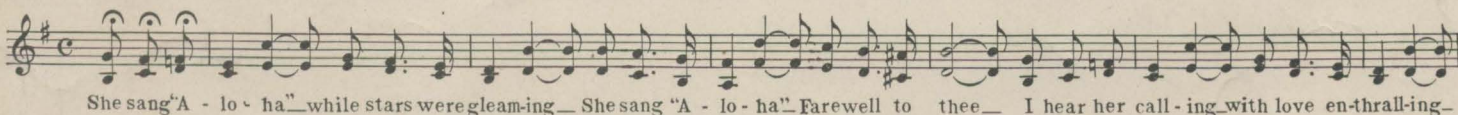
I'LL KEEP ON LOVING YOU, Sentimental Ballad



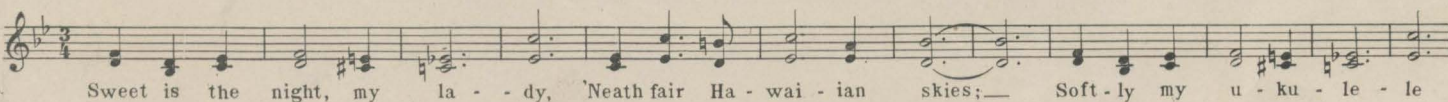
IN OUR LITTLE LOVEMOBILE, Auto Waltz Song



SHE SANG 'ALOHA' TO ME, Hawaiian Ballad



SWEET IS THE NIGHT, MY LADY, Hawaiian Serenade



BONNIE BELL, Three-step, introducing She Sang 'Aloha'



If your dealer is unable to supply you with any of the above numbers, order direct from the publisher.