

Wynna Chester

STAR OF THE EAST

Words by
GEORGE COOPER

Music by
AMANDA KENNEDY



PRICE 60¢ IN U.S.A.

Leo Feist inc.
1540 BROADWAY • NEW YORK 36, N. Y.

Jack's
HOUSE OF MUSIC
GARDEN RUSTIC SHOPS
Opposite Country Club Centre
2528 Yorktown Avenue
Sacramento 21, Calif.

Star of the East

STAR OF THE EAST

(MELODY, STAR OF THE SEA)
(Medium Voice)

Words by
GEORGE COOPER

Music by
AMANDA KENNEDY

Moderato

mf

Red. * Red. * Red. * Red. * Red. * Red. * Red. * Red. *

Cantabile.

1. Star of the East, Oh Beth-le-hem's star, Guid-ing us on to Heav-en a-far!
2. Star of the East, un-dim'd by each cloud What tho' the storms of grief gath-er loud?

mp

Red. * Red. * Red. * Red. * Red. * Red. * Red. * Red. *

Sor-row and grief are lull'd by thy light, Thou hope of each mor-tal, in death's lone-ly night!
Faith-ful and pure thy rays beam to save, Still bright o'er the cra-dle, and bright o'er the grave!

Red. * Red. * Red. * Red. * Red. * Red. * Red. * Red. *

7842-3

Copyright 1890 by Hitchcock & McCargo Pub. Co., Ltd.
Copyright assigned 1900 to Feist & Frankenthaler
Copyright renewed 1918 by Amanda Kennedy and George Cooper
Copyright renewal assigned 1918 to Leo Feist, Inc., New York, N. Y.

International Copyright Secured

Made in U. S. A.

All Rights Reserved Including Public Performance For Profit
Any arrangement or adaptation of this composition without the consent of the owner is an infringement of copyright

Fear-less and tran-quil, we look up to thee! Know-ing thou beam'st thro' e -
Smiles of a Sav-iour are mir-ror'd in thee! Glimps-es of Heav'n in thy

And. * *And.* * *And.* *

ter - ni - ty! Help us to fol - low where thou still dost guide,
light we see! Guide us still on-ward to that bles-sed shore,

And. * *And.* * *And.* *

Pil - grims of earth so wide. Star of the East, thou
Af - ter earth's toil is o'er!

And. * *And.* * *And.* * *And.* * *And.* * *And.* *

hope of the soul, While round us here the dark bil - lows roll,

And. * *And.* * *And.* * *And.* * *And.* * *And.* *

Lead us from sin to glo-ry a - far, Thou star of the East, thou sweet Beth'lem's star.

*And. * And. * And. * And. * And. * And. * And. **

Solo or Duet.

Oh star that leads to God a - bove! Whose rays are Peace and Joy and Love! Watch

dolce.

*And. * And. * And. * And. * And. * And. * And. **

o'er us still till life hath ceased, Beam on, bright star, sweet Beth-le-hem star!

Fine.

*And. * And. * And. * And. * And. * And. * And. **

legato.

D. S.

*And. * And. **

7842-3

WARNING! Any person copying any part of the Words or Music of this song, whether or not for profit, shall be subject to all penalties and liabilities, criminal and/or civil, provided by United States Copyright Laws.

Sacred and Semi-Sacred Songs

THE TWENTY-THIRD PSALM

Text from The King James Version Music by Alfred Newman
 Sung in the 20th Century-Fox Picture "David And Bathsheba"



The Lord is my shep-herd; I shall not want. He mak-eth me to lie—

Copyright 1951 TWENTIETH CENTURY MUSIC CORPORATION, New York, N. Y. • Rights throughout the world controlled by ROBBINS MUSIC CORPORATION, New York, N. Y.

IF GOD FORGOT (For Just One Day)

Words by John W. Bratton Music by Geoffrey O'Hara

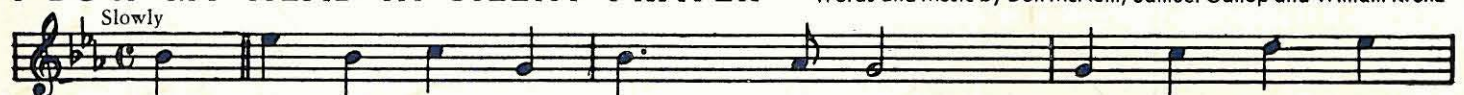


If God for - got for just one day, And took his won - d'rous

Copyright 1947 ROBBINS MUSIC CORPORATION, New York, N. Y.

I BOW MY HEAD IN SILENT PRAYER

Words and Music by Don McNeill, Samuel Gallop and William Krenz

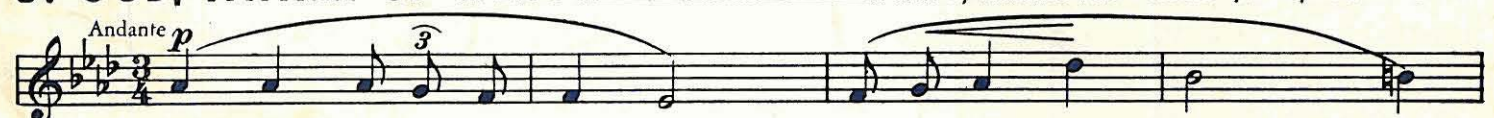


I Bow My Head In Si - lent Pray'r Know - ing Thou wilt

Copyright 1944-1945-1946 ROBBINS MUSIC CORPORATION, New York, N. Y.

O! GOD, FATHER OF MERCY

Words by Florence Tarr Music by Joseph A. Burke



O! God, Fa-ther Of Mer - cy Who art ev - 'ry - where

Copyright 1946 ROBBINS MUSIC CORPORATION, New York, N. Y.

SOME CLAY WITHOUT A SCULPTOR

By Edward E. Confrey

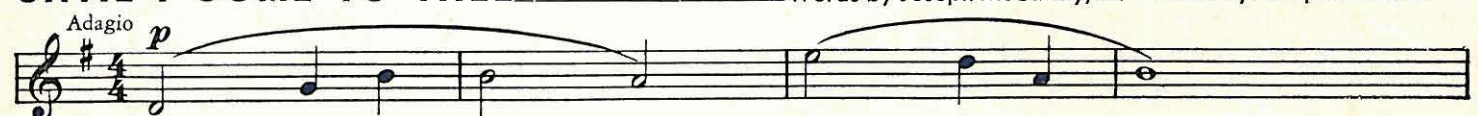


Some clay with-out a—Sculp - tor— set out to be a stat - ue— grand,— but thought that

Copyright 1946 ROBBINS MUSIC CORPORATION, New York, N. Y.

UNTIL I COME TO THEE

Words by Joseph McCarthy, Jr. Music by Joseph A. Burke



O, gen - tle Fa - ther help me to be

Copyright 1946 ROBBINS MUSIC CORPORATION, New York, N. Y.

SHEPHERD SHOW ME HOW TO GO

Poem by Mary Baker Eddy Musical Setting by Hugo Frey

(Adapted from a Beethoven Theme)



Shep-herd show me how to go O'er the hill - side steep, How to gath - er—

Copyright 1948 ROBBINS MUSIC CORPORATION, New York, N. Y.

Price 60c Each in U.S.A.