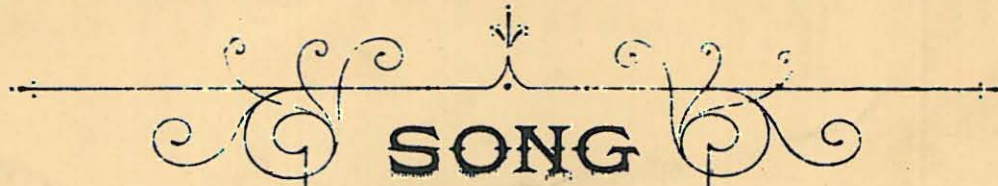




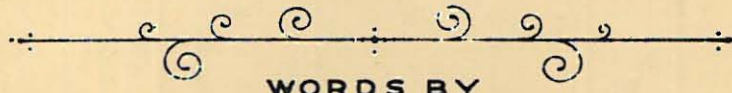
MY BEAUTIFUL LADY



SONG

FROM THE MUSICAL COMEDY

THE PINK LADY



WORDS BY

C. M. S. MCLELLAN



MUSIC BY

IVAN CARYLL

PRICE 40 CENTS

NET

EXCEPT CANADA AND FOREIGN COUNTRIES

CHAPPELL & CO LTD.

MELBOURNE

LONDON

SYDNEY

FOR THE COUNTRIES OF NORTH AMERICA

CHAPPELL - HARMS, INC.

NEW YORK

ALL RIGHTS RESERVED UNDER THE INTERNATIONAL COPYRIGHT ACT
PUBLIC PERFORMANCE OF ALL OR ANY PART OF THE WORK STRICTLY FORBIDDEN
APPLICATIONS FOR THE RIGHT OF PERFORMANCE MUST BE MADE TO MESSRS. KLAU & ERLANGER
THE ADAPTATION OF THIS COMPOSITION TO ANY FORM OF MECHANICAL MUSICAL INSTRUMENT
EITHER FOR PRIVATE OR PUBLIC PERFORMANCE IS STRICTLY PROHIBITED.

THE PUBLIC PERFORMANCE OF ANY PARODIED VERSION OF THIS SONG IS STRICTLY PROHIBITED.

6228.

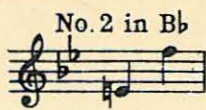
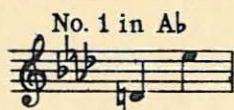
Copyright, MCMXI. by Chappell & Co Ltd

PRINTED IN U.S.A.

My BEAUTIFUL LADY

*Best wishes
to Nellie
from
Hath
Dec 13/34*

ANOTHER GEM FROM THE PEN OF THIS GIFTED COMPOSER



IN THE GARDEN OF TO-MORROW

Song

Words by
GEO. GRAFFE Jr.
REFRAIN

Music by
JESSIE L. DEPPEN

p
In the garden of to - mor - row, Will the ros-es be more fair?—

p
Will we find re-lief from sor - row, Will there be more sunshine th - e - re?

p
For each loveflow'r that will blos - som, Some will die and fade a - way.—

REFRAIN

In the garden of to-morrow,
Will the roses be more fair?
Will we find relief from sorrow,
Will there be more sunshine there?
For each love flow'r that will blossom,
Some will die and fade away.
Oh! I'd so much rather,
All my love flow'rs gather,
From the garden of to-day.

Copyright 1924 by Chappell & Co. Ltd.
Published by Chappell Harms Inc., New York

CHAPPELL-HARMS INC., 62 West 45th St., New York

MY BEAUTIFUL LADY.

Words by C. M. S. McLELLAN.

Music by IVAN CARYLL.

Moderato

f

(Claudine) If I were a man I'd be not
 (Angele) Each night on a rip - pling tide of

pres-i-dent, but just he Who plays the vi - o - lin in the band, At the
 mel - o - dy I would glide, And live in the light of beau - ty's eyes, With....

Ca - fé de Par - is.....
 ev - 'ry - thing else out - side.....

dim. *mf* *f* *dim.*

Copyright, 1911, by Chappell & Co., Ltd.

ALL RIGHTS RESERVED
 Including Public Performance For Profit

For then I should have a chance, By fid - dling to en -
I'd woo with a mag - ic bow, Such har-mon-ics sweet and

trance, And fill with ar-dour of romance the pret-ti-est girls in
low, The la - dies would for-get to eat, and Pom-me-ry cease to

cresc.

France. And while I'd play my
flow.

f *mf*

yearn - ing eyes would say, My yearn - ing eyes would say,.....

rall.

Tempo di Valse

To you, beau-ti-ful la-dy, I raise my eyes,.....

mf con espressione

My heart, beau-ti-ful la-dy, to your heart sighs,.....

Come, come, beau-ti-ful la-dy, to Par - a - dise,..... E're the

cresc.

sweet, sweet waltz dream dies,.....

Glide, Glide, beau-ti-ful la-dy, on light, bright wings,.....

mf

Detailed description: This system contains the first two lines of music. The top line is a vocal melody in a treble clef with a key signature of two flats and a common time signature. The lyrics are 'Glide, Glide, beau-ti-ful la-dy, on light, bright wings,.....'. The bottom two lines are piano accompaniment in a grand staff (treble and bass clefs). The piano part begins with a mezzo-forte (*mf*) dynamic marking. The music features a mix of quarter and eighth notes, with some chords and arpeggiated figures.

While the rap-ture of mu-sic a-round us swings,.....

dim.

Detailed description: This system contains the third and fourth lines of music. The vocal line continues with the lyrics 'While the rap-ture of mu-sic a-round us swings,.....'. The piano accompaniment continues, ending with a *dim.* (diminuendo) marking. The piano part features a mix of chords and moving lines in both hands.

Dream, dream, dream and for-get Care, pain, use-less re-gret,

pp

Detailed description: This system contains the fifth and sixth lines of music. The vocal line has the lyrics 'Dream, dream, dream and for-get Care, pain, use-less re-gret,'. The piano accompaniment starts with a pianissimo (*pp*) dynamic marking. The music is characterized by a steady, rhythmic accompaniment with some melodic movement in the piano part.

Love, love, beau-ti-ful la-dy, in my heart sings.....

f *p*

Detailed description: This system contains the seventh and eighth lines of music. The vocal line concludes with the lyrics 'Love, love, beau-ti-ful la-dy, in my heart sings.....'. The piano accompaniment features a forte (*f*) dynamic marking in the middle of the system, followed by a piano (*p*) marking towards the end. The piano part includes some arpeggiated chords and melodic lines.