

ADELIZI

NEW EDITION

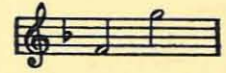
No 1 IN C



No 2 IN D



No 3 IN F



---

**THE BLIND PLOUGHMAN**

**SONG**

[ WITH ORGAN ACCOMPANIMENT, AD LIB. ]

WORDS BY

**MARGUERITE RADCLYFFE-HALL**

MUSIC BY

**ROBERT CONINGSBY CLARKE**

PRICE 60 CENTS

**CHAPPELL & Co., Inc.**

RKO BUILDING - ROCKEFELLER CENTER

NEW YORK, N.Y.

**CHAPPELL & Co., Ltd.**

LONDON

PARIS

—  
SYDNEY

PRINTED IN U.S.A.

# THE BLIND PLOUGHMAN. Song.

## ORGAN ACCOMPANIMENT.

Words by  
MARGUERITE RADCLYFFE-HALL.

Music by  
ROBERT CONINGSBY CLARKE.

Moderate time. *f*

VOICE. *f* Set my hands up - on the plough, My

ORGAN. *f* Piano 3 6 4

*mf* Ev - 'ry year the spread - ing trees Shel - ter birds that sing.

Organ. *mf*

Ped.

*ten. rit. ten.*

*P slower.* From the shel - ter of your heart, Brother - drive out sin.

*P slower.*

Man. Copyright MCMXIII by Chappell & Co., Ltd.

ALL RIGHTS RESERVED  
Including Public Performance For Profit

# THE BLIND PLOUGHMAN.

## Song.

Words by  
MARGUERITE RADCLYFFE-HALL.

Music by  
ROBERT CONINGSBY CLARKE.

Moderate time.

VOICE.

PIANO.

*f with force*

*rit.*

8ve below...  
Ped. \* Ped. \* Ped. \*

*f*

Set my hands up - on the plough, My feet up - on the sod:

*in time*

*f* *ff*

Ped. \* Ped. \* Ped. \* Ped. \* Ped. \* Ped. \*

Turn my face to - wards the east, And praise be to God!

Ped. \* Ped. \* Ped. \* Ped. \* Ped. \* Ped. \*

From "Songs of Three Counties and other Poems" published by Messrs Chapman & Hall.

ALL RIGHTS RESERVED  
Including Public Performance For Profit

soft

Ev - 'ry year the rains do fall, The seeds they stir and

*fp*

spring; Ev - 'ry year the spread - ing trees

*mf rit. ten.*

*rit.*

Shel - ter birds that sing.

*rit. ten.*

*rit. ten. mf in time*

*ped. \* ped. \* ped. \* ped. \* ped. \* ped. \**

*p* Slower.

From the shel - ter of your heart,

*p* Slower.

R.H.

Broth-er— drive out sin,

Let the lit - tle

birds of faith Come and nest there - in.

*mf*

God has made His sun to shine On both you and

*mf*

Red. \* Red. \* Red. \* Red. \*

*f* *move*

me; God, who took a - way my eyes, That my

*f*

Red. \* Red. \* Red. \* Red. \*

*ten.*

soul \_\_\_\_\_ might see! \_\_\_\_\_

*ff* *ten.* *fz in time* *fff* *ffz*

*ten.*

*ffz*

Red. \* *see below* Red. \* Red. \* Red. \* Red. \* Red. \*