

# Who's Sorry Now

LYRIC BY  
BERT KALMAR  
& HARRY RUBY  
MUSIC BY  
TED SNYDER



JACK CHAPMAN  
AND HIS  
DRAKE HOTEL ORCHESTRA  
CHICAGO, ILL



MADE  
IN  
U.S.A.

Waterson, Berlin & Snyder Co.  
STRAND  
THEATRE  
BUILDING  
NEW YORK

Trade Mark Registered

Barbelle

# Who's Sorry Now?

Words by  
BERT KALMAR  
and HARRY RUBY

Music by  
TED SNYDER

Valse moderato

Piano introduction in 3/4 time, key of B-flat major. The music is marked *f* (forte). It features a melody in the right hand and a bass line in the left hand, both in a waltz style.

VOICE

Vocal line and piano accompaniment for the first verse. The vocal line is in the treble clef, and the piano accompaniment is in the grand staff. The music is marked *p* (piano). The lyrics are: "You smiled when we part-ed, It hurt me some-how, I thought there was Al-tho' I for-give you, I can-not for-get, How you shat-tered

Vocal line and piano accompaniment for the second verse. The vocal line is in the treble clef, and the piano accompaniment is in the grand staff. The lyrics are: "noth-ing worth while. The tab-les are turn-ing, And all my i-deals. You smiled when I told you, That

Vocal line and piano accompaniment for the third verse. The vocal line is in the treble clef, and the piano accompaniment is in the grand staff. The lyrics are: "you're cry-ing now, While I am just learn-ing to smile. you would re-gret, And now you know just how it feels.

## CHORUS

Who's sor-ry now? Who's sor-ry now? Who's heart is ach-ing for break-ing each

*p-f*

vow? Who's sad and blue? Who's cry-ing too? Just like I cried ov-er

you. Right to the end, Just like a friend, I tried to

warn you, some-how. You had your way, Now you must pay;

1 2

I'm glad that you're sor-ry now. \_\_\_\_\_ now. \_\_\_\_\_

*Optional ending into Fox-Trot Cho. Moderato*

now. Who's sor-ry now?\_ Who's sor-ry now?

Who's heart is ach-ing for break-ing each vow?\_

Who's sad and blue?\_ Who's cry-ing too?\_ Just like I

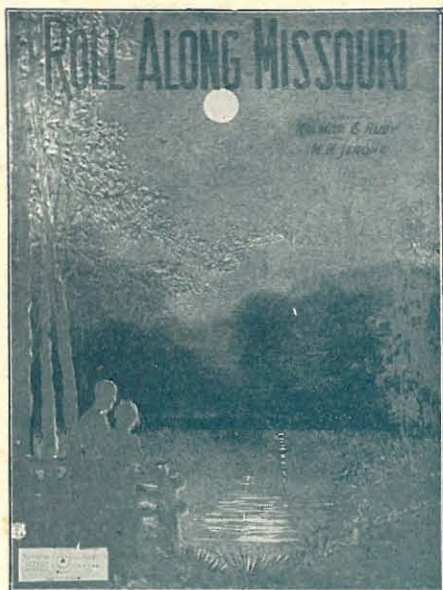
cried ov-er you.— Right to the end,—

Just like a friend — I tried to warn you, some-how.

You had your way — Now you must pay,—

I'm glad that you're sor-ry now.

# BE SURE TO GET COPIES OF THESE BIG SONG HITS



ASK TO HEAR THESE  
SONGS PLAYED

## Roll Along Missouri

Words by  
BERT KALMAR  
and HARRY RUBY

Music by  
M. K. JEROME

Chorus

Roll — a — long — Mis — sour — i, — While  
I — wait by — the shore.  
Sing — your song — Mis — sour — i

Copyright MCMXXIII by Waterson, Berlin & Snyder Co.  
Copyright, Canada, MCMXXIII by Waterson, Berlin & Snyder Co.  
International Copyright Secured

Made in U. S. A.

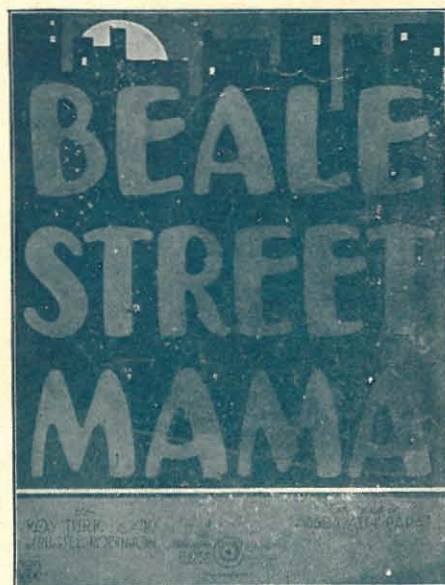
## Beale Street Mamma

By ROY TURK and  
J. RUSSEL ROBINSON  
Writers of "Aggravatin' Papa"

Chorus

"Beale Street mam-ma, why don't you come back home? It is-n't proper.  
To leave your pa-pa all a lone. Sometimes I was  
cruel, that's true, — But mam-ma your sweet pa-pa nev-er two-timed you: — Boo-

Copyright MCMXXIII by Waterson, Berlin & Snyder Co.  
Copyright Canada MCMXXIII by Waterson, Berlin & Snyder Co.  
International Copyright Secured.



OUR CATALOG OF LATE SONGS  
SENT FREE ON REQUEST.

### LATEST SONG HITS

STELLA  
YES SIR! THAT'S LAZY BONES  
TWO TIME DAN  
ROLL ALONG MISSOURI  
THAT TACOMA HOME O'MINE  
LITTLE BOY BLUES  
HOTSY TOSY TOWN  
PIPE ORGAN BLUES

WAITIN' FOR THE EVENIN' MAIL  
DADDY'S WONDERFUL PAL  
WHO'S SORRY NOW  
BEALE STREET MAMMA  
BELLA DONNA  
THE FIRST WALTZ  
DON'T THINK YOU'LL BE MISSED  
JOE IS HERE

SOMEWHERE, SOMEHOW SOMEDAY  
DOWN IN MARYLAND  
MOTHER IN IRELAND  
THE LOVELIGHT IN YOUR EYES  
AGGRAVATIN' PAPA  
ONE NIGHT IN JUNE  
THAT SWEET SOMEBODY O'MINE  
I'll Be In My Dixie Home Again To-Morrow

These Songs for sale at all Music Dealers or sent direct for 35c or any three for one dollar—also obtainable on all Phonograph Records and Music Rolls.

WATERSON, BERLIN & SNYDER CO.,

1571 BROADWAY, NEW YORK, N. Y.