

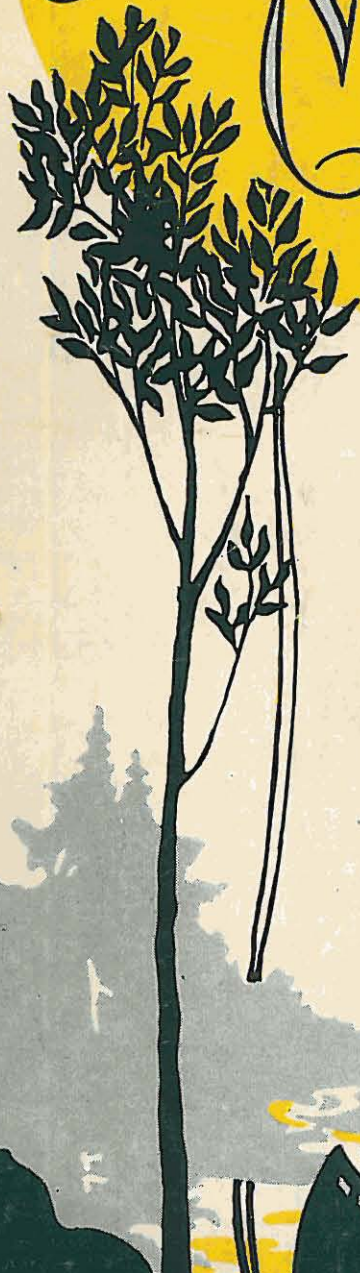
Where the Lazy Mississippi Flows Song

(LAZY
MISSISSIPPI)

Words by
ALEXIS FRENCH

Music By
Rollo de Freyne

THE
DUTCH MILL CO.
DENVER



WHERE THE LAZY
MISSISSIPPI FLOWS

Full Orchestra...50¢ net
Small Orchestra...35¢
Military Band...50¢

FOR THE COUNTRIES OF NORTH AMERICA
CHAPPELL-HARMS, INC.
185 Madison Ave. New York, N.Y.

FOR ALL OTHER COUNTRIES
CHAPPELL & CO LTD.
MELBOURNE LONDON SYDNEY

Song.....60¢
Piano Solo....60¢
Price 2/-Net. Cash

WHERE THE LAZY MISSISSIPPI FLOWS

(Lazy Mississippi)

Words by
ALEXIS FFRENCH

SONG

Music by
ROLLO DE FREYNE

Tempo di Valse

f
con Ped.

The piano introduction is in 3/4 time, B-flat major. It begins with a treble clef and a bass clef. The right hand plays a series of chords and single notes, while the left hand provides a steady accompaniment. The piece concludes with a fermata over the final chord.

p

Nights I'm al - ways
Ban - jos gen - tly

The first line of the song features a vocal melody in the treble clef and piano accompaniment in the bass clef. The piano part includes a triplet of eighth notes and a *rit.* (ritardando) marking. The lyrics are written below the vocal line.

dream - ing, _____
strum - min', _____

Dreams of far a - way, _____
Drift - ing through the trees _____

The second line continues the vocal and piano accompaniment. The piano part features a series of chords in the right hand and a steady bass line in the left hand. The lyrics are written below the vocal line.

Times when I was hap - py _____
Dark - ies soft - ly hum - min _____

The third line concludes the vocal and piano accompaniment. The piano part features a series of chords in the right hand and a steady bass line in the left hand. The lyrics are written below the vocal line.

All the live - long day. _____
 O'er the scent - ed breeze. _____

Some - times _____
 Some day _____

Red. *

in the twi - light _____
 I'm re - turn - ing _____

Voic - es seem to _____
 To my home once _____

p

call, _____
 more. _____

When de stars am shin - in' _____
 Where the palm - trees sway - in' _____

molto rit.

And de shad - ows fall: _____
 Whis - per from the shore: _____

molto rit.

Red. *

REFRAIN *Più Lento* (Lazy)

p-f VIOLIN or VOICE

p-f
Where — the la — zy Mis — sis-sip-pi Flows — in — to — the

sea; — There — my li — l' cur — ly-head-ed

ba — by waits for me. — And tho' — Im far — a —

a tempo

- way from my old home, My thoughts will ev - er be _____

a tempo

a tempo

2d time rit.

Where _____ the la - - zy Mis - sis - sip - pi Flows in -

2d time rit.

2d time rit. colla voce

1 *a tempo* 2 *rit.*

a tempo *rit.*

- to the sea. _____ sea. _____

a tempo *rit.* D.C. Intro. for 2d Verse

a tempo *rit.* D.C. Intro. for 2d Verse

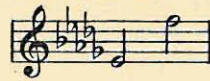
Red. *

THE SENSATIONAL SUCCESS OF THE "PIERROT PLAYERS"

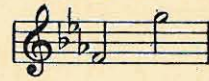
No. 1 in B \flat



No. 2 in D \flat



No. 3 in E \flat



THE WORLD IS WAITING FOR THE SUNRISE

Words by
EUGENE LOCKHART

SONG

Music by
ERNEST SEITZ

Slow - but with a certain swing
espressivo

Dear one *8va...* The world *8va...* is wait - ing for the

sun *8va...* rise, *8va...* Ev - *8va...* 'ry rose *8va...* is

heav - y with dew. *8va...* The thrush *8va...* on

high his sleepy mate is calling,
And my heart is calling you.

Copyright Canada 1919 by Chappell & Co. Ltd.

Copyright 1919 by Chappell & Co. Ltd.

New Edition Copyright 1919 by Chappell & Co. Ltd.

YOU CAN OBTAIN A COPY FROM YOUR DEALER

Price 40 cents net cash