

To Mother  
B. Chgo 1/14/22

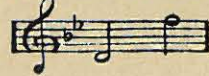
NO 1 IN G.



NO 2 IN A<sup>b</sup>.



NO 3 IN B<sup>b</sup>.



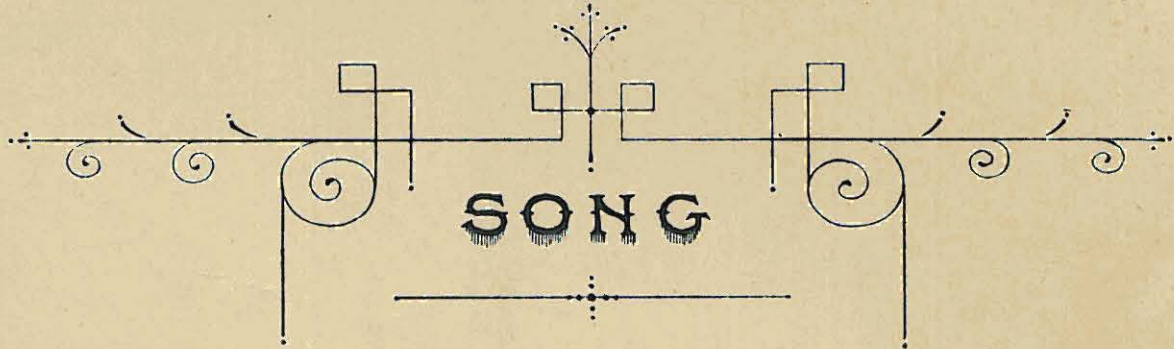
NO 4 IN C



# THAT OLD FASHIONED

# MOTHER OF MINE

(AN OLD FASHIONED LADY.)



Words by

## WORTON DAVID.

Music by

## HORATIO NICHOLLS.

T. B. HARM S  
FRANCIS, DAY & HUNTER  
NEW YORK

London - FRANCIS, DAY & HUNTER, 138-140 CHARING CROSS, ROAD, W.C.

THAT OLD FASHIONED  
MOTHER OF MINE

# That Old Fashioned Mother Of Mine

3

Words by  
WORTON DAVID

(An Old Fashioned Lady)

Music by  
HORATIO NICHOLLS

With great expression

Piano

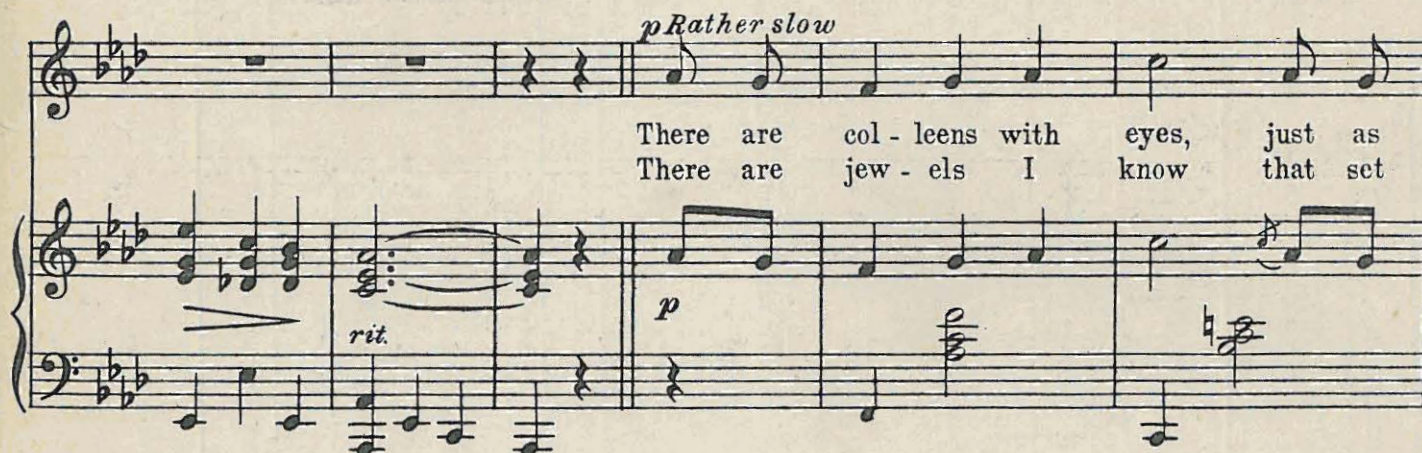


*f*

The piano introduction consists of two staves. The right hand features a series of chords and eighth notes, while the left hand provides a steady bass line. A dynamic marking of *f* (forte) is placed at the beginning.

*p* Rather slow

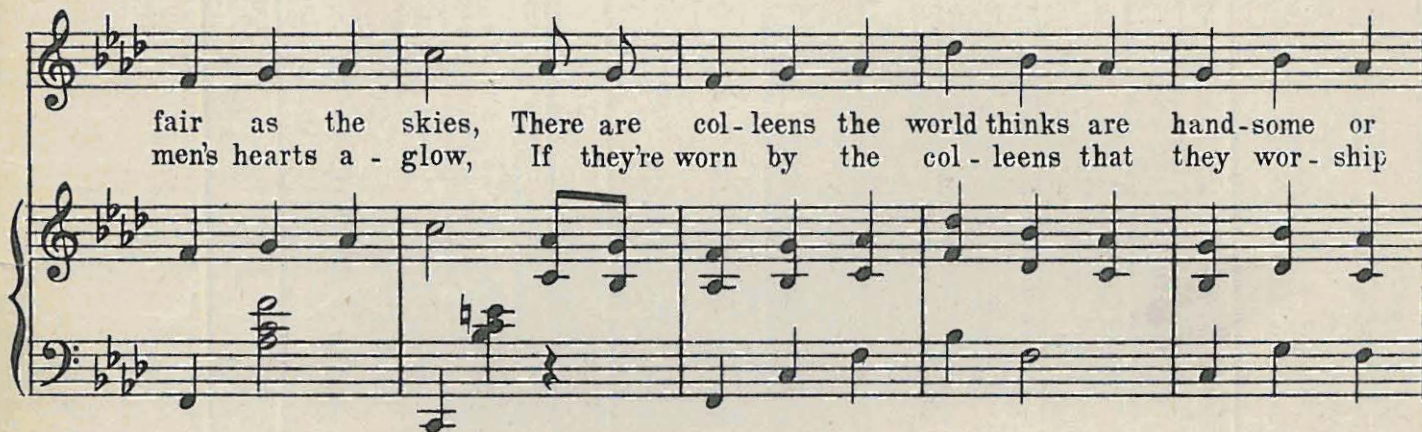
There are col - leens with eyes, just as  
There are jew - els I know that set



*rit.* *p*

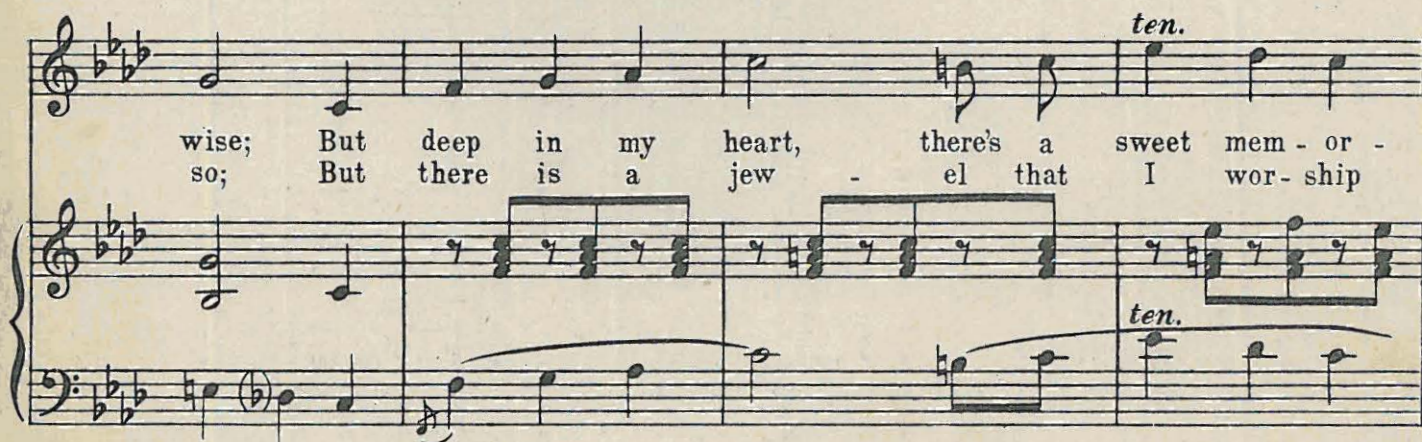
The first line of the song features a vocal melody and piano accompaniment. The tempo is marked *p* (piano) and *Rather slow*. The piano part includes a *rit.* (ritardando) marking and a *p* (piano) dynamic marking.

fair as the skies, There are col - leens the world thinks are hand - some or  
men's hearts a - glow, If they're worn by the col - leens that they wor - ship



The second line of the song continues the vocal melody and piano accompaniment. The piano part features a steady bass line and chords.

wise; But deep in my heart, there's a sweet mem - or -  
so; But there is a jew - el that I wor - ship



*ten.*

*ten.*

The third line of the song concludes the vocal melody and piano accompaniment. The piano part features a steady bass line and chords. The tempo marking *ten.* (tenu) is present.

- y, Of some - one who still holds at - tract - ions for me:  
more, It's set in the heart of the one I a - dore:

*rall.*

Refrain  
*Tenderly*

Just an old fash - ioned la - dy with old fash - ioned ways, And a

*p-f*

*p* *p-f*

smile that says "Wel - come!" to you: ——— An old fash - ioned

bed-side where she kneels and prays, When the toil of the long day is

*rit. ten. a tempo*

through; ——— Though she wears no fine clothes or no rich silk - en

*ten. rit. a tempo*

hose, Still there's some-thing that makes her di - vine; ——— For the

*rit.*

an - gels a - bove taught the way how to love; To that old fash - ioned

*rit.*

1 2

moth - er of mine. ——— Just an mine. ———

D.C.

# THE SEASON'S SENSATIONAL HIT OLD FASHIONED GARDEN

Words and Music by  
COLE PORTER

## Refrain

*p-f*

It was an old — fash - ioned gar - den — Just an

*p-f*

old — fash - ioned gar - den — But it

car - ried me back — To that dear lit - tle shack — In the

Copyright MCMXIX by T. B. Harms & Francis, Day & Hunter, N.Y.  
All Rights Reserved International Copyright Secured

# NEW AND POPULAR SONGS

by

## GUY D'HARDELOT

### THE LITTLE WHITE TOWN.

Words by ADA LEONORA HARRIS.

Keys *E<sub>b</sub>* (Compass *B<sub>b</sub>* to *E<sub>b</sub>*) *F* and *G*

*Andante con moto.*

There's a little white town not far from the sea, And a - way from the world, where I fain would be; There's a

*p* *mf*

*p* *p* *mf*

*Ed.* \* *Ed.* \* *Ed.* \* *Ed.* \* *Ed.* \*

COPYRIGHT, MCMXIV, BY CHAPPELL & CO LTD.

### ROSES OF FORGIVENESS.

Words by EDWARD TESCHEMACHER.

Keys *B<sub>b</sub>* (Compass *E<sub>b</sub>* to *E<sub>b</sub>*) *C* and *D*

*Larghetto.* ♩ = 72

If you came back from out the mist of years With ros-es of forgiveness in your hands,

*p* *mf*

*p ben legato e sostenuto* *p* *mf*

*duo Ed.* \* *Ed.* \* *Ed.* \* *Ed.* \*

COPYRIGHT, MCMXIII, BY CHAPPELL & CO LTD.

### FROM PARADISE.

Words by EDWARD TESCHEMACHER.

Keys *E<sub>b</sub>* (Compass *E<sub>b</sub>* to *E<sub>b</sub>*) *F* and *G*

*Moderato.* ♩ = 72

*mf brightly*

A lit-tle bird flew out of Pa - ra - dise, When this old world was young, long years gone by, — And

*Ed.* \* *Ed.* \* *Ed.* \* *Ed.* \* *Ed.* \* *Ed.* \*

COPYRIGHT, MCMXIII, BY CHAPPELL & CO LTD.

Chappell & Co Ltd. 50, New Bond Street, London.W.

NEW YORK

TORONTO

MELBOURNE

Music Publishers and Pianoforte Manufacturers.

May be had of all Music Sellers.

**THE LATEST SUCCESSFUL SONG CYCLE**

# **Songs of the Southern Isles**

## **A Cycle of Four Songs**

Words by Edward Teschemacher

Music by HERMANN LÖHR

[Keys : Low, Medium and High]

Hermann Löhr, one of the most eminently successful composers of English songs, has written nothing more melodious than these "**Songs of the Southern Isles.**" The reason for his immense popularity is not difficult to find, for it is seldom that a composer who writes so well and so correctly can also make his music attractive to the general public.

The melody of "**Star of the South**" is as natural and ingenuous as a folk-song. "**I Dream of a Garden of Sunshine**" is a beautiful reverie in which the voice part, a simple and tender melody, floats above the piano accompaniment and gives the harmonic picture a golden edge.

"**Cyprian Night Song**" has a tinge of languorous Southern passion. It is tranquil on the surface, but there is longing and an echo of sadness in the heart of the singer.

"**When Spring comes to the Islands**" is redolent of the poetry of May. The rich and rippling accompaniment supplies the accents and the vitality, while the vocal melody wells from the singer like the happy carol of a bird.

The great song-loving public has potent reasons for admiring Hermann Löhr. This new cycle, "**Songs of the Southern Isles**" is one of them.

PRICE, \$1.00 NET, COMPLETE

CHAPPELL & CO., Ltd., 41, East 34th Street, New York

LONDON, TORONTO, AND MELBOURNE