

JAMES E. WEINHEIMER
Men's Residence Hall
Friends University
WICHITA, KANSAS

784.2

JOHN IRELAND

SEA FEVER

SONG

WITH PIANOFORTE ACCOMPANIMENT

Words by

JOHN MASEFIELD

- No. 1, in E minor
- 2, in F minor
- 3, in G minor
- 4, in A minor

Each net 2/6



AUGENER Ltd
18 GREAT MARLBOROUGH STREET,
LONDON, W. 1.



Printed in England.

Sea Fever

SEA FEVER

Words by
John Masfield

Music by
John Ireland



Lento (about $\text{♩} = 52 - 56$)

VOICE

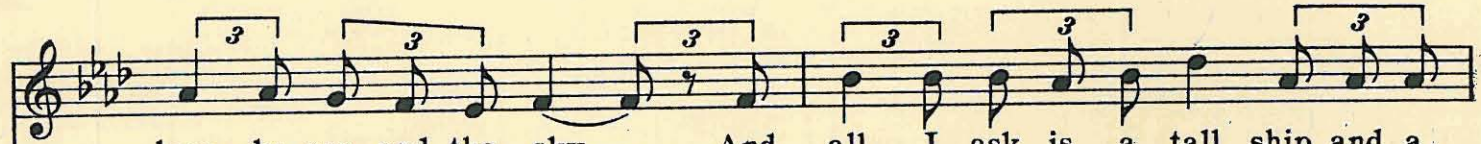


I must go down to the seas a - gain, to the

PIANO



col. 220.



lone - ly sea and the sky, — And all I ask is a tall ship and a



star to steer her by, — And the wheel's kick and the wind's song and the



hw

white sail's sha-king, And a grey mist on the sea's face, and a grey dawn break - -

poco più mosso

p

Detailed description: This system contains the first line of music. The vocal line is in a treble clef with a key signature of three flats (B-flat, E-flat, A-flat). It features several triplet markings. The piano accompaniment is in a grand staff (treble and bass clefs) with a key signature of three flats. It includes a piano (*p*) dynamic marking and a *poco più mosso* tempo instruction. The lyrics are: "white sail's sha-king, And a grey mist on the sea's face, and a grey dawn break - -".

- ing. I must go down to the seas a-gain, for the call of the run-ning tide— Is a

p

Detailed description: This system contains the second line of music. The vocal line continues with triplet markings. The piano accompaniment includes a piano (*p*) dynamic marking. The lyrics are: "- ing. I must go down to the seas a-gain, for the call of the run-ning tide— Is a".

wild call and a clear call, that may not be de - nied;— And

cresc.

Detailed description: This system contains the third line of music. The vocal line continues with triplet markings. The piano accompaniment includes a *cresc.* (crescendo) dynamic marking. The lyrics are: "wild call and a clear call, that may not be de - nied;— And".

hw

all I ask is a wind - y day with the white clouds fly - ing, And the

mf

flung spray and the blown spume, and the sea - gulls cry - - ing.

p

I must go down to the seas a - gain, to the vag - rant gyp - sy life, — To the

pesante e cresc. *simile*

hu hu

gull's way and the whale's way, where the wind's like a whet-ted knife;— And

cresc. molto *ff*

Detailed description: This system contains the first line of music. The vocal line is in a treble clef with a key signature of three flats (B-flat major/D minor). It features several triplet markings (indicated by a '3' in a circle) over groups of three notes. The piano accompaniment is in a grand staff (treble and bass clefs) and consists of block chords and some moving lines. Dynamics include 'cresc. molto' (crescendo molto) and 'ff' (fortissimo). There are also some handwritten markings above the piano part, possibly indicating fingerings or articulation.

all I ask is a mer-ry yarn from a laugh-ing fel-low-ro-ver, And

mf *dim.*

Detailed description: This system contains the second line of music. The vocal line continues with triplet markings. The piano accompaniment features a dynamic marking of 'mf' (mezzo-forte) followed by 'dim.' (diminuendo). The piano part includes some sustained chords and a melodic line in the right hand.

qui-et sleep and a sweet dream when the long trick's o - - ver.

p *pp*

Detailed description: This system contains the third and final line of music. The vocal line concludes with triplet markings. The piano accompaniment starts with a dynamic marking of 'p' (piano) and later moves to 'pp' (pianissimo). The piano part features sustained chords and some melodic movement, ending with a fermata over a final chord.

SEA FEVER.

I must go down to the seas again, to the lonely
sea and the sky,
And all I ask is a tall ship and a star to steer her
by;
And the wheel's kick and the wind's song and the
white sail's shaking,
And a grey mist on the sea's face, and a grey dawn
breaking.

I must go down to the seas again, for the call of
the running tide
Is a wild call and a clear call that may not be
denied;
And all I ask is a windy day with the white clouds
flying,
And the flung spray and the blown spume, and the
sea-gulls crying.

I must go down to the seas again, to the vagrant
gypsy life,
To the gull's way and the whale's way where the
wind's like a whetted knife;
And all I ask is a merry yarn from a laughing
fellow-rover,
And quiet sleep and a sweet dream when the long
trick's over.

JOHN MASEFIELD.

All prices liable to alteration without notice

JOHN IRELAND

SONGS

With Pianoforte Accompaniment

| | | | |
|---|------------|---|-----|
| SEA FEVER. Poem by John Masfield | Net 2/6 | THE LAND OF LOST CONTENT. | |
| No. 1 in E minor. Compass B to D | | Album of Six Songs from "A Shropshire Lad," by A. E. Housman. | |
| 2 in F minor. Compass C to E flat | | | Net |
| 3 in G minor. Compass D to F | | High Key; original | 4/- |
| 4 in A minor. Compass E to G | | Low Key | 4/- |
| Voice part only with Tonic Sol-fa by W. G. Glock. per 100 15/- | -/2 | Or separately: | |
| THE BELLS OF SAN MARIE. | | THE LENT LILY | 2/6 |
| Poem by John Masfield | 2/6 | No. 1 in D min. Compass F to E | |
| No. 1 in G minor. Compass C to D | | 2 in E min. Compass G to F sharp | |
| 2 in A minor. Compass D to E | | LADSLÖVE | 2/6 |
| 3 in C minor. Compass F to G | | No. 1 in F. Compass D to F | |
| MY TRUE LOVE HATH MY HEART. | | 2 in A flat. Compass F to A flat | |
| Poem by Sir Philip Sidney | 2/6 | GOAL AND WICKET | 2/6 |
| No. 1 in E. Compass D to F | | No. 1 in C sharp minor. | |
| 2 in G. Compass F to A | | Compass C sharp to E | |
| THE TRELIS. Poem by Aldous Huxley | 2/6 | 2 in E minor. Compass E to G | |
| No. 1 in F. Compass A to E | | THE VAIN DESIRE | 2/6 |
| 2 in A flat. Compass C to G | | No. 1 in F# min. Compass D flat to F | |
| VAGABOND. Poem by John Masfield | 2/6 | 2 in A min. Compass E to A flat | |
| No. 1 in F. Compass C to C | | THE ENCOUNTER | 2/6 |
| 2 in G. Compass D to D | | No. 1 in A. Compass E to E | |
| 3 in A flat. Compass E flat to E flat | | 2 in C. Compass G to G | |
| 4 in B flat. Compass F to F | | EPILOGUE | 1/- |
| SANTA CHIARA. Poem by Arthur Symons | 2/6 | No. 1 in B flat. Compass D to F | |
| No. 1 in G minor. Compass C to E flat | | 2 in D flat. Compass F to A flat | |
| 2 in A minor. Compass D to F | | THREE SONGS Complete | 5/- |
| 3 in C minor. Compass F to A flat | | or separately: | |
| GREAT THINGS. Poem by Thomas Hardy | 2/6 | LOVE AND FRIENDSHIP. | |
| No. 1. Compass C to E | | Poem by Emily Brontë | |
| 2. Compass D to F sharp | | Compass C to G | 2/6 |
| | | FRIENDSHIP IN MISFORTUNE. | |
| | | Words Anon | |
| | | Compass D flat to F | 2/6 |
| | | THE ONE HOPE. | |
| | | Poem by D. G. Rossetti | |
| | | Compass B flat to F sharp | 2/6 |

AUGENER Ltd.

18 GREAT MARLBOROUGH STREET,
LONDON, W. 1.