

DADDY'S SWEETHEART

Song

Words by
CURTIS HARDIN-BURNLEY
(Adapted)

Music by
LIZA LEHMANN

Allegretto un poco vivace

mf *vivaciously*
Con Ped.

The piano introduction consists of two systems of music. The first system shows the treble and bass clefs with a key signature of one sharp (F#) and a 4/4 time signature. The second system continues the piece with a dynamic marking of *mf* and the instruction *vivaciously*. The bass line includes the instruction *Con Ped.* (Con Pedal).

mf *Very lightly and rhythmically*

Ma - ry Jane told me, this morn - ing,

The first system of the vocal and piano accompaniment features a vocal line with lyrics and a piano accompaniment. The dynamic marking is *mf* with the instruction *Very lightly and rhythmically*. The piano accompaniment includes a *mf* marking.

Some - thing that made me a - fraid; She

The second system of the vocal and piano accompaniment continues the lyrics. The piano accompaniment features a *mf* marking.

DADDY'S SWEETHEART

said I'd have to mar-ry a man Or be a cross old

maid..... I'm so wor-ried, I don't know what to do, For

I've a se-cret, I'll tell it to you: I don't love a - ny man but my

p poco rall. *pp a tempo* *colla voce* *pp a tempo*

Dad - dy, And he's al - rea - dy married, don't you see?.....

Oh, if mother had-n't mar-ried Dad-dy, Dad-dy might have married

me!

p con tenerezza
Oft - en he calls me his

p dolce

"Sweet - heart," He loves me such a lot! If

cresc

mo - ther had - n't snapp'd him up, I might have caught him, why

cresc

not?..... She might have cho - sen some - one else, For

Do not drag

ev - 'ry - bo - dy loves her, but as for my - self;

p rall.

p colla voce

No - bo - dy loves me but my Dad - dy, And

pp a tempo

pp a tempo

he's al - rea - dy mar-ried, don't you see?..... Oh, if mo-ther

had - n't mar-ried Dad - dy, Dad - dy might have wait - ed for

me! Ah! if mo-ther had-n't married Dad - dy,

sempre cresc. *pp*

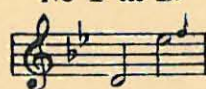
sempre cresc. *rall.*

Dad - dy might have mar - ried me!

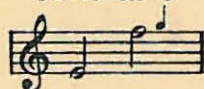
a tempo

THE PHENOMENAL ARTISTIC BALLAD SUCCESS

No 1 in B \flat



No 2 in C



No 3 in D



ROSES OF PICARDY SONG

Words by
FRED. E. WEATHERLY

Music by
HAYDN WOOD

pp *Slowly.*

Ro - ses are shin - ing in Pi - car - dy, in the hush of the sil - ver

Slowly.

dew, Ro - ses are flow'r - ing in Pi - car - dy, but there's

mf

nev - er a rose like you! And the ro - ses will die with the

p

summertime,
And our roads may be far apart,
But there's one rose that dies not in Picardy!
'Tis the rose that I keep in my heart!"

Copyright, 1916, by Chappell & Co., Ltd.

VIDE PRESS Nothing but the Merits of the Song can explain its Extraordinary Success.

You can obtain a copy of this song from your music dealer

Price 40 Cents Net Cash