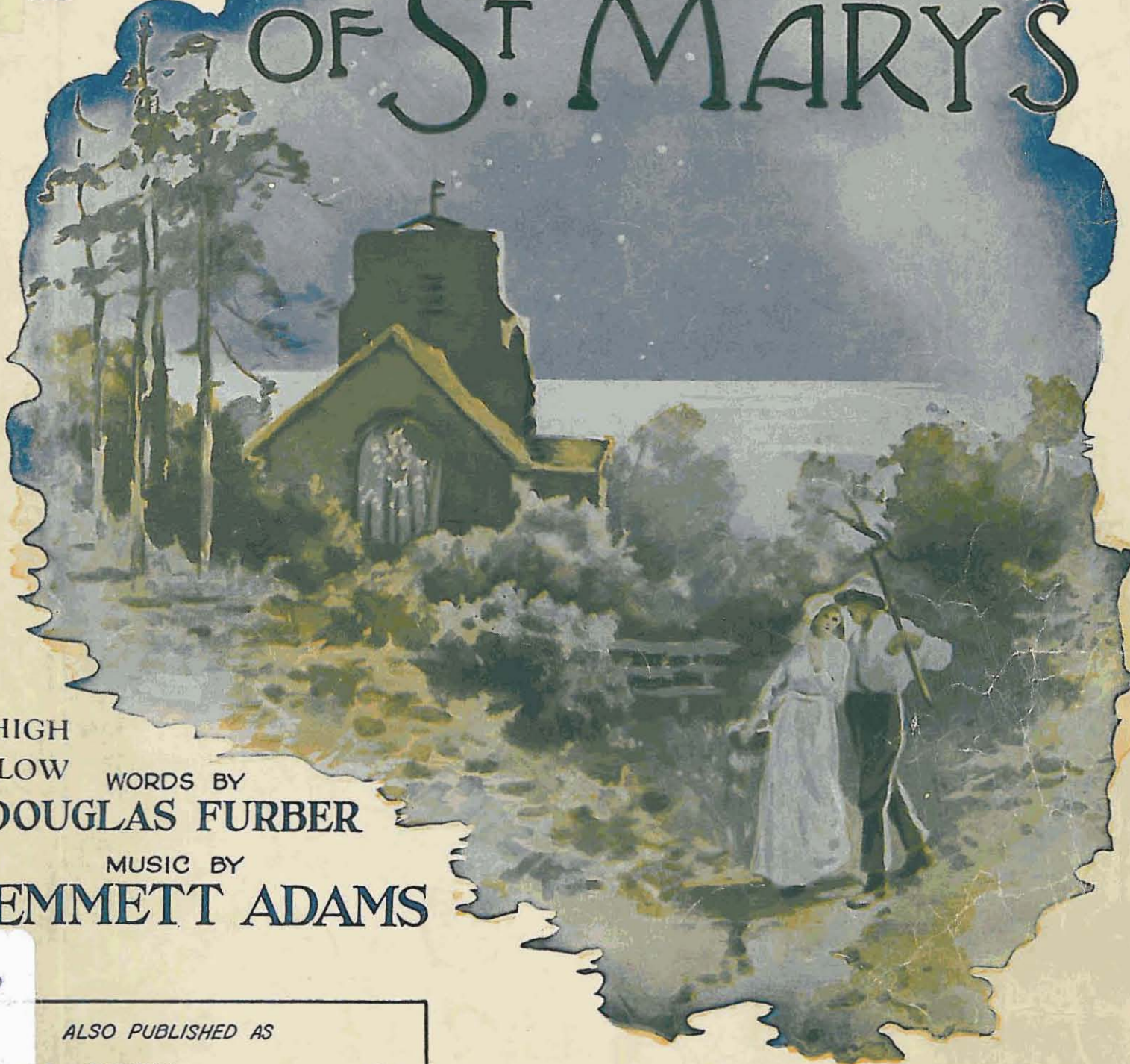


# THE BELLS OF ST. MARY'S



HIGH  
 \* LOW  
 WORDS BY  
**DOUGLAS FURBER**  
 MUSIC BY  
**A. EMMETT ADAMS**

ALSO PUBLISHED AS

SOLO - QUENTIN	50c
SOLO - WALTZ - LESTRANGE	75c
DUET - SIMPLIFIED - SPAULDING	30c
SOLO - OCTAVO SCHOOL CHORUS	15c
SOLO - OCTAVO TRIO S.S.A.	15c
QUARTETTE T.T.B.B.	15c
QUARTETTE S.A.T.B.	15c
ORCHESTRATION E <sup>b</sup> -F	65c
ARRANGED FOR ORCHESTRA	50c
PIANO ARRANGEMENT	50c

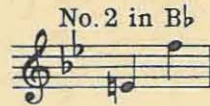
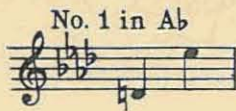
*The Bells of St. Mary's*

FOR THE UNITED STATES AND CANADA

**CHAPPELL**  
 & CO. INC.  
 RKO BUILDING  
 ROCKEFELLER  
 CENTER - N.Y.C.

FOR ALL OTHER COUNTRIES  
 ASCHERBERG, HOPWOOD & CREW, LTD.  
 LONDON, W.I.

ANOTHER GEM FROM THE PEN OF THIS GIFTED COMPOSER



# IN THE GARDEN OF TO-MORROW

## Song

Words by  
GEO. GRAFFE Jr.  
REFRAIN

Music by  
JESSIE L. DÉPPEN

*p*

In the garden of to - mor - row, Will the ros-es be more fair?—

Will we find re lief from sor - row, Will there be more sunshine th - e - re?

For each loveflowr that will blos - som, Some will die and fade a - way.—

### REFRAIN

In the garden of to-morrow,  
Will the roses be more fair?  
Will we find relief from sorrow,  
Will there be more sunshine there?  
For each love flowr that will blossom,  
Some will die and fade away.  
Oh! I'd so much rather,  
All my love flowrs gather,  
From the garden of to-day.

Copyright 1924 by Chappell & Co. Ltd.

CHAPPELL & CO. INC., RKO Building, Rockefeller Center, New York, N.Y.

# THE BELLS OF ST MARY'S

Words by  
DOUGLAS FURBER  
*Ukulele arr. by May Singhi Breen*

Tune Ukulele  
A D F# B  
Put Ukulele Capo on 1st fret

Music by  
A. EMMETT ADAMS

**Moderato**

VOICE

PIANO

*p*

The bells of St Ma-ry's at sweet ev - en - tide, Shall  
At the porch of St Ma-ry's I'll wait there {with} you In {your} {my}

*p*

call me be - lov - éd, to come to your side, And out in the val - ley in  
soft wed-ding dress with its rib - bons of blue, In the church of St Ma-ry's sweet

\*Letters over UKE diagrams are names of chords  
adaptable to Banjo or Guitar in original key

Copyright, MCMXVII, by Ascherberg, Hopwood & Crew Ltd.

Symbols for Guitar  
arr. by S. M. Zoltai

E $\flat$  B $\flat$ 7 E $\flat$  A $\flat$  Gmi.<sup>4</sup>

so my be - lov - éd, When red leaves are fall - ing, The

\* Cmi. Gmi. Cmi. Gmi. Cmi. Gmi. A $\flat$  Gmi. A $\flat$  B $\flat$ 7 E $\flat$  B $\flat$ 7

love-bells shall ring out - ring out For you and me. The

*cresc.* *f* *ff* *rall.*

E $\flat$  B $\flat$ 7 E $\flat$  A $\flat$

Bells of St! Ma - ry's, Ah! hear they are call - ing The

*allegro*

\* Bell effect in Chords for Uke or Guitar









young loves - the true loves Who come from the sea, And so, my be -











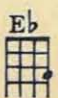



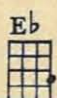






lov - é d, When red leaves are fall - ing, The love - bells shall ring out - ring out For



1
2 *rall.*

you and me. you and me. \_\_\_\_\_



\* Bell effect in Chords for Uke or Guitar

A Song Of "Thanksgiving" Suitable For All Occasions

# We Thank Thee

Lyric by  
JOAN FITZGERALD

Music by  
MALCOLM FITZGERALD

Brightly, but not too fast

Piano

*mf*

*mf*

For gold - en fields of har - vest grain, For

*mf*

fra - grant breez - es, gen - tle rain, For Na - ture's

*mf*

joy - ous, grand re - frain We thank - Thee,

*f*

Copyright MCMXXXV by Chappell & Co., Inc.

CHAPPELL & CO. INC.

R. K. O. BUILDING  
ROCKEFELLER CENTER

NEW YORK, N. Y.

# TWO STANDARD SONGS OF REAL MERIT

Words by  
ROBERT LEWIS SHAYON

## Rain

Music by  
LEAH RUSSELL

Piano

*mf cresc.* *f*

*p*

Of all the gifts in God's do-main, I think the most sub -  
lime is rain. The rain that keeps the earth re - newed

Copyright MCMXXXVI by Chappell & Co., Inc. N.Y.C.

## I SEE A TREE

Words and Music by  
MICHAEL HODGES

VOICE

PIANO

*p*

I see a  
tree Stand - ing there where man - y used to  
be, Lone - ly and for - sak - en. A tree

Copyright, MCMXXXVI, by Chappell & Co Ltd.

**CHAPPELL**  
 & CO. INC.  
 RKO BUILDING  
 ROCKEFELLER  
 CENTER - N.Y.C.

**CHAPPELL**  
 & CO. LTD. - LONDON